



RUNX1 Monoclonal Antibody

Catalog No	YP-Ab-01015
Isotype	IgG
Reactivity	Human
Applications	WB;IF;ELISA
Gene Name	RUNX1
Protein Name	Runt-related transcription factor 1
Immunogen	Synthesized peptide of human RUNX1.
Specificity	RUNX1 Monoclonal Antibody detects endogenous levels of RUNX1 protein.
Formulation	Ascitic fluid containing 0.03% sodium azide,0.5% BSA, 50%glycerol.
Source	Monoclonal, Mouse
Purification	Affinity purification
Dilution	Western Blot: 1/500 - 1/2000. Immunofluorescence: 1/200 - 1/1000. ELISA: 1/10000. Not yet tested in other applications.
Concentration	1 mg/ml
Purity	≥90%
Storage Stability	-20°C/1 year
Synonyms	RUNX1; AML1; CBFA2; Runt-related transcription factor 1; Acute myeloid leukemia 1 protein; Core-binding factor subunit alpha-2; CBF-alpha-2; Oncogene AML-1; Polyomavirus enhancer-binding protein 2 alpha B subunit; PEA2-alpha B; PEBP2-alpha
Observed Band	
Cell Pathway	Nucleus.
Tissue Specificity	Expressed in all tissues examined except brain and heart. Highest levels in thymus, bone marrow and peripheral blood.
Function	alternative products:Additional isoforms seem to exist,caution:The fusion of AML1 with EAP in T-MDS induces a change of reading frame in the latter resulting in 17 AA unrelated to those of EAP.,disease:A chromosomal aberration involving RUNX1/AML1 is a cause of chronic myelogenous leukemia (CML). Translocation t(3;21)(q26;q22) with EAP, MSD1 or EVI1.,disease:A chromosomal aberration involving RUNX1/AML1 is a cause of chronic myelomonocytic leukemia. Inversion inv(21)(q21;q22) with USP16.,disease:A chromosomal aberration involving RUNX1/AML1 is a cause of M2 type acute myeloid leukemia (AML-M2). Translocation t(8;21)(q22;q22) with RUNX1T1/MTG8/ETO.,disease:A chromosomal aberration involving RUNX1/AML1 is a cause of therapy-related myelodysplastic syndrome (T-MDS). Translocation t(3;21)(q26;q22) with EAP, MSD1 or EVI1.,disease:A chromosomal aberration involving RUNX1/AML1 is found in child

**Background**

Core binding factor (CBF) is a heterodimeric transcription factor that binds to the core element of many enhancers and promoters. The protein encoded by this gene represents the alpha subunit of CBF and is thought to be involved in the development of normal hematopoiesis. Chromosomal translocations involving this gene are well-documented and have been associated with several types of leukemia. Three transcript variants encoding different isoforms have been found for this gene. [provided by RefSeq, Jul 2008],

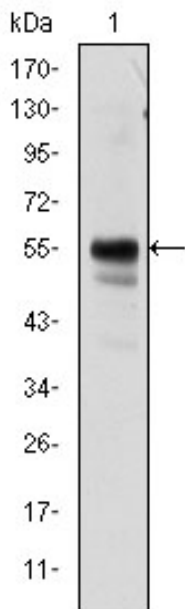
matters needing attention

Avoid repeated freezing and thawing!

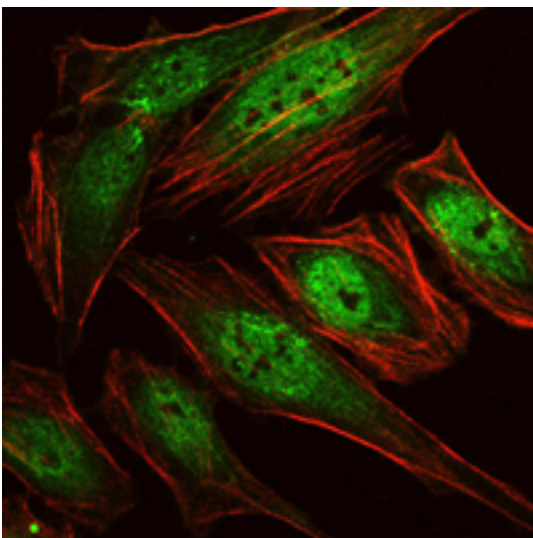
Usage suggestions

This product can be used in immunological reaction related experiments. For more information, please consult technical personnel.

Products Images



Western Blot analysis using RUNX1 Monoclonal Antibody against Jurkat cell lysate.



Immunofluorescence analysis of HeLa cells using RUNX1 Monoclonal Antibody (green). Red: Actin filaments have been labeled with Alexa Fluor-555 phalloidin.

